



Forest Land Resource Consultants, LLC

Consulting Forestry & Real Estate

P.O. Box 7 • West End, NC 27376

(910) 673-0001 Office • (910) 673-3233 Fax • www.forestlandrc.com

INVITATION TO BID ON STANDING TIMBER

Owned by

“Mrs. Vivian M. Williams”

Moore County, NC

46 wooded acres, more or less

SALE DATE: 12:00 P.M. – 02/25/2010

Timber Volumes

<u>Product</u>	<u>Volume</u>
Pine Sawtimber	373,000 bf
Pine Pulpwood	160 tons
Red Oak	51,000 bf
Yellow Poplar Logs	38,000 bf
White Oak	44,000 bf
Sweetgum Logs	9,000 bf
Hardwood Blend	671 tons

A timber cruise using tenth acre fixed plots was performed to determine the timber volumes; however, timber volumes are given for information only and are not guaranteed. Cruise lines were spaced 3 chains apart and 2 chains between plots. Acres were determined using a GPS mobile mapping device and a beacon using DGPS correction, with sub-meter accuracy.

Tract Location

This tract is located in the south-eastern corner of the intersection of Bensalem Church Road, and Oak Ridge Road, in Moore County. Refer to the attached maps for better detail.

Description of Timber & Land

All merchantable timber of every sort and kind contained within the designated sale area is offered for sale on a clear-cut basis. The timber consists of a mixture of loblolly pine, longleaf pine, red and white oak, poplar, maple, hickory, and gum. The boundary for this sale have been flagged with Pink-Glo ribbon and painted with pink and orange paint. Painted sale boundary trees are not to be harvested. The SMZ have not been painted. Within the SMZ all pine species and hardwood measuring 16” or larger at DBH may be harvested.

Walter E. Thomas, RF: Registered Forester #409 • Broker #47789 • walter@forestlandrc.com

Matthew L. Wimberly, RF, ACF: Registered Forester #1407 • Broker #254183 • Certified Burner #566 • wimberly@forestlandrc.com

Land Sales & Acquisitions, Forest Management, Timber Investment Analysis, Timber Marketing, Timber Appraisals,
Present Use Plans, GIS/GPS Mapping, Prescribed Burning, Casualty and Non-casualty Losses

Access

Access for logging can be initiated from Bensalem Church Road and Oak Ridge Road. The location of logging deck will be in coordination with Forest Land Resource Consultants and the Owner. Refer to the attached map for location of existing and new road locations.

Bids

All bids for this sale will be received on a “**lump sum basis only**”. Bids will be accepted and disclosed at **12:00 P.M. Thursday, February 25, 2010** in my office in Seven Lakes. Please contact our office for directions. All interested buyers who would like to submit a bid in person are to meet at the office on the day of the sale. If you cannot be present for the sale, you have until 11:00 a.m. the same day to place your bid by mail, fax (910) 673-3233, office (910) 673-0001 or by cell phone (910) 639-0124.

The owner reserves forty-eight (48) hours to determine the acceptance or denial of any or all bids.

Conditions of Sale

- 1) The Buyer will have twenty-four (24) months from the date of execution of the timber deed to cut and remove the timber.
- 2) No trees, laps, limbs, or other debris resulting from the logging operation shall be left in any roads, fields, branches, or across boundary or cutting lines.
- 3) All existing or constructed roads shall be left in as good as or better condition after use, as was prior to use. If weather conditions are such that excessive rutting or other damage is occurring to any areas of the property up to and including the Sale Area or Access road, Forest Land Resource Consultants, LLC, Agent for the Seller, may suspend logging operations if appropriate measures are not taken to limit the damage.
- 4) All trash such as, but not limited to, oil cans, paper bags, sandwich wrappers, bottles, food cans, etc. are to be carried off on a daily basis.
- 5) Forest Land Resource Consultant, LLC, Agent of the Seller, is to be notified when logging operations begin and at least three (3) days prior to completion.
- 6) **INDEMNITY CLAUSE:** The Buyer shall indemnify and hold harmless the Seller from any and all liability for loss to any person whomsoever for property damage, personal injury, death, or otherwise during activities incident to or related to this contract, including any fines resulting from noncompliance with Best Management Practices. The Buyer will carry sufficient insurance and liability insurance to protect Seller from any liability whatsoever, and will furnish evidence of such insurance upon request of Seller and/or his Agent.
- 7) The draining of oil, grease, or hydraulic oil onto the ground on this property is expressly forbidden. Drainage of such petroleum products should be into adequate containers and disposed of properly.
- 8) No line or corner witness trees are to be cut, and any destroyed property corner shall be immediately restored at the Buyer's expense.
- 9) The Buyer shall be liable for compliance with Forest Practices Guidelines Related To Water Quality (Best Management Practices): Statue 15 NCAC, Subchapter 1J, Sections .0101 thru .0209.
- 10) The Buyer shall at closing post a \$3,000.00 performance bond with Forest Land Resource Consultants, LLC. The bond shall be forfeitable in part or in whole upon the basis of a final inspection by the Agent. The amount of the bond is not intended to limit what the agent may determine to be the maximum damage that may have been incurred or inflicted.

Attachments

Volume summary sheets, timber sale map, and sale location map.

Vivian Williams - Lewis Tract

Summary Report

Tract: Lew 2010
Compartment: 1

Cruised Acres: 46
of Plots: 76

Plot Type: F
Plot Size or BAF: 10

Product	Trees	Tons	MBF	Cords	Cunits	Topwood				
						Tons	BA	SPA	DBH	Ht
Pine Sawtimber	1,725	2,496	373	945	727	120	50	38	15.3	3.5
Pine Pulpwood	133	40	0	15	11	0	1	3	8.0	7.5
Total:	1,858	2,535	373	960	738	120	51	40	14.7	3.8

Product	Trees	Tons	MBF	Cords	Cunits	Topwood				
						Tons	BA	SPA	DBH	Ht
Hardwood Pulpwood	1,126	403	0	146	104	0	12	24	9.2	5.9
Red Oak	321	378	51	130	100	82	11	7	16.9	1.8
Palletwood	502	339	36	118	89	29	8	11	11.8	2.3
White Oak	327	329	44	114	87	78	10	7	16.1	1.6
Yellow Poplar	200	251	38	91	70	35	6	4	15.8	2.5
Hickory	127	127	14	44	36	30	4	3	16.4	1.8
Sweetgum	79	87	9	30	24	14	2	2	15.5	2.3
Total:	2,681	1,915	192	674	510	268	54	58	12.5	3.7

Grand Total: 4,539 Trees, 4,450 Tons, 565 MBF, 1,635 Cords, 1,248 Cunits, 387 Topwood Tons, 105 BA, 99 SPA, 13.4 DBH, 3.7 Ht

Pine Sawtimber

DBH	Trees	Totals				Per Acre					Per Tree			
		Tons	MBF	Cunits	Topwood	Trees	Tons	MBF	Cun.	Top	Tons	BF	Cun	Top
10	151	69	7	21	25	3.3	1.5	0.2	0.4	0.5	0.5	46	0.1	0.2
12	339	288	31	85	39	7.4	6.3	0.7	1.9	0.8	0.8	93	0.3	0.1
14	363	436	57	128	26	7.9	9.5	1.2	2.8	0.6	1.2	157	0.4	0.1
16	381	580	86	169	17	8.3	12.6	1.9	3.7	0.4	1.5	224	0.4	0.0
18	260	498	80	144	8	5.7	10.8	1.7	3.1	0.2	1.9	308	0.6	0.0
20	121	302	51	87	3	2.6	6.6	1.1	1.9	0.1	2.5	424	0.7	0.0
22	73	219	40	63	1	1.6	4.8	0.9	1.4	0.0	3.0	546	0.9	0.0
24	36	104	21	29	0	0.8	2.3	0.5	0.6	0.0	2.9	582	0.8	0.0
15.3	1,725	2,496	373	727	120	37.5	54.3	8.1	15.8	2.6	1.4	216	0.4	0.1

Conversion Factors

Tons/MBF: 6.69
Tons/Cunit: 3.43
Tons/Cord: 2.64
Cunits/MBF: 1.95

Logrule && FC: S 78
Avg. Height: 3.5

Yellow Poplar

DBH	Trees	Totals		Per Acre							Per Tree			
		Tons	MBF	Cunits	Topwood	Trees	Tons	MBF	Cun.	Top	Tons	BF	Cun	Top
12	30	17	2	5	3	0.7	0.4	0.0	0.1	0.1	0.6	70	0.2	0.1
14	61	57	8	16	7	1.3	1.2	0.2	0.3	0.2	0.9	125	0.3	0.1
16	42	51	8	14	8	0.9	1.1	0.2	0.3	0.2	1.2	179	0.3	0.2
18	36	68	10	19	8	0.8	1.5	0.2	0.4	0.2	1.9	288	0.5	0.2
20	24	49	8	14	7	0.5	1.1	0.2	0.3	0.2	2.0	340	0.6	0.3
22	6	9	2	3	3	0.1	0.2	0.0	0.1	0.1	1.4	271	0.4	0.4
15.8	200	251	38	70	35	4.3	5.4	0.8	1.5	0.8	1.3	188	0.3	0.2

Conversion Factors

Tons/MBF: 6.67
 Tons/Cunit: 3.59
 Tons/Cord: 2.75
 Cunits/MBF: 1.86

Logrule & FC: S 78

Avg. Height: 2.5

White Oak

DBH	Trees	Totals		Per Acre							Per Tree			
		Tons	MBF	Cunits	Topwood	Trees	Tons	MBF	Cun.	Top	Tons	BF	Cun	Top
14	157	113	14	30	28	3.4	2.5	0.3	0.6	0.6	0.7	89	0.2	0.2
16	79	82	11	22	18	1.7	1.8	0.2	0.5	0.4	1.0	136	0.3	0.2
18	36	39	5	10	11	0.8	0.8	0.1	0.2	0.2	1.1	146	0.3	0.3
20	30	48	7	13	11	0.7	1.0	0.1	0.3	0.2	1.6	224	0.4	0.3
22	24	47	7	13	10	0.5	1.0	0.2	0.3	0.2	2.0	289	0.5	0.4
16.1	327	329	44	87	78	7.1	7.2	1.0	1.9	1.7	1.0	134	0.3	0.2

Conversion Factors

Tons/MBF: 7.53
 Tons/Cunit: 3.79
 Tons/Cord: 2.90
 Cunits/MBF: 1.99

Logrule & FC: S 76

Avg. Height: 1.6

Sweetgum

DBH	Trees	Totals		Per Acre							Per Tree			
		Tons	MBF	Cunits	Topwood	Trees	Tons	MBF	Cun.	Top	Tons	BF	Cun	Top
14	36	35	3	9	4	0.8	0.8	0.1	0.2	0.1	1.0	83	0.3	0.1
16	24	25	3	7	5	0.5	0.5	0.1	0.2	0.1	1.0	114	0.3	0.2
18	18	28	3	8	4	0.4	0.6	0.1	0.2	0.1	1.5	192	0.4	0.2
15.5	79	87	9	24	14	1.7	1.9	0.2	0.5	0.3	1.1	117	0.3	0.2

Conversion Factors

Tons/MBF: 9.47
 Tons/Cunit: 3.60
 Tons/Cord: 2.87
 Cunits/MBF: 2.63

Logrule & FC: D 78

Avg. Height: 2.3

Red Oak

DBH	Trees	Totals		Per Acre							Per Tree			
		Tons	MBF	Cunits	Topwood	Trees	Tons	MBF	Cun.	Top	Tons	BF	Cun	Top
14	103	73	9	19	19	2.2	1.6	0.2	0.4	0.4	0.7	87	0.2	0.2
16	85	91	12	24	18	1.8	2.0	0.3	0.5	0.4	1.1	141	0.3	0.2
18	61	82	11	22	17	1.3	1.8	0.2	0.5	0.4	1.3	185	0.4	0.3
20	36	58	8	15	13	0.8	1.3	0.2	0.3	0.3	1.6	226	0.4	0.3
22	36	75	11	20	15	0.8	1.6	0.2	0.4	0.3	2.1	302	0.5	0.4
16.9	321	378	51	100	82	7.0	8.2	1.1	2.2	1.8	1.2	160	0.3	0.3

Conversion Factors

Tons/MBF: 7.38
Tons/Cunit: 3.78
Tons/Cord: 2.90
Cunits/MBF: 1.95

Logrule & FC: S 76
Avg. Height: 1.8

Palletwood

DBH	Trees	Totals		Per Acre							Per Tree			
		Tons	MBF	Cunits	Topwood	Trees	Tons	MBF	Cun.	Top	Tons	BF	Cun	Top
10	103	47	4	12	2	2.2	1.0	0.1	0.3	0.0	0.5	40	0.1	0.0
12	351	254	27	67	19	7.6	5.5	0.6	1.4	0.4	0.7	76	0.2	0.1
14	48	39	5	10	8	1.1	0.8	0.1	0.2	0.2	0.8	98	0.2	0.2
11.8	502	339	36	89	29	10.9	7.4	0.8	1.9	0.6	0.7	71	0.2	0.1

Conversion Factors

Tons/MBF: 9.54
Tons/Cunit: 3.81
Tons/Cord: 2.87
Cunits/MBF: 2.50

Logrule & FC: S 76
Avg. Height: 2.3

Hickory

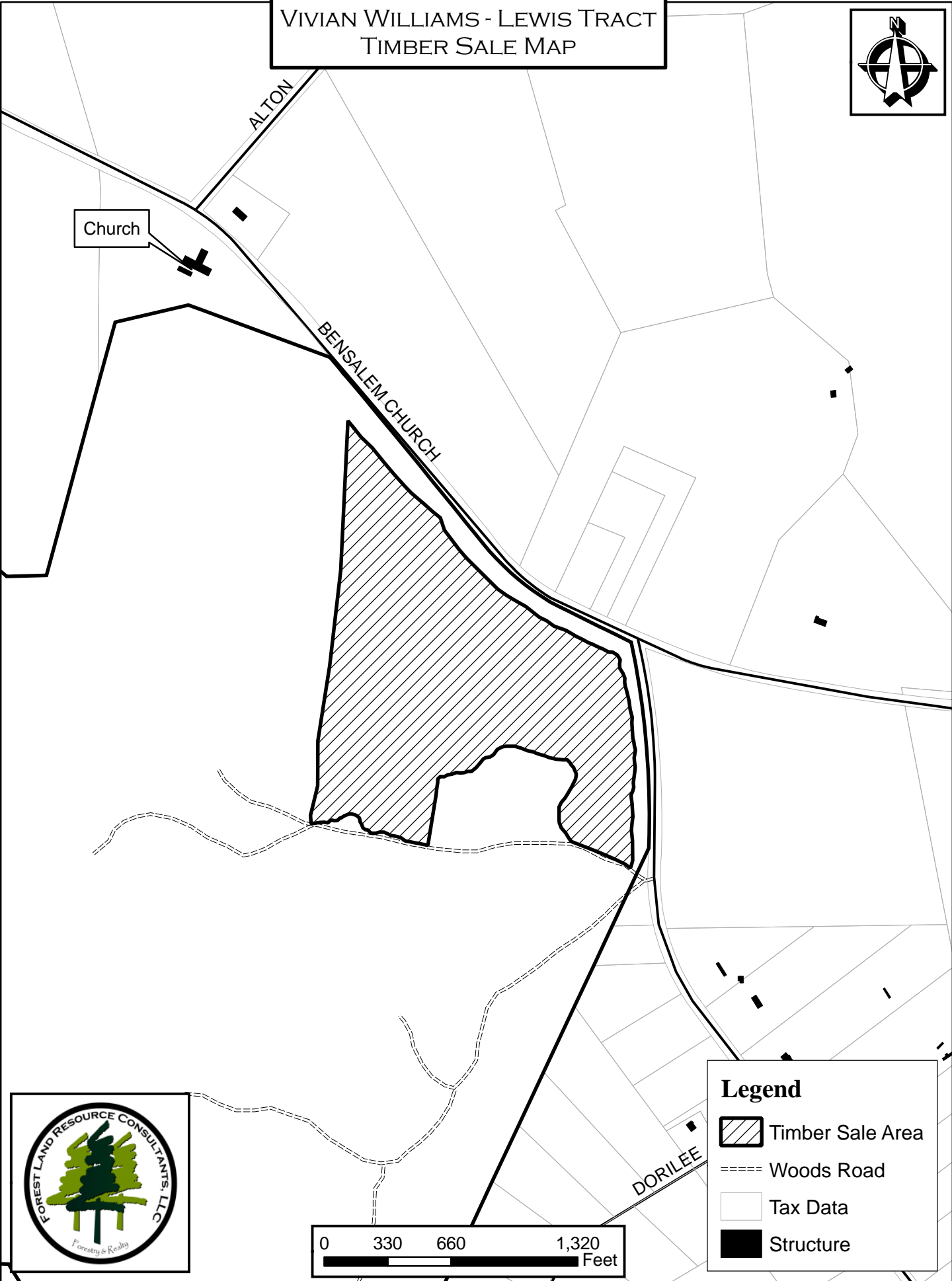
DBH	Trees	Totals		Per Acre							Per Tree			
		Tons	MBF	Cunits	Topwood	Trees	Tons	MBF	Cun.	Top	Tons	BF	Cun	Top
14	42	32	3	9	7	0.9	0.7	0.1	0.2	0.1	0.8	65	0.2	0.2
16	42	36	4	10	10	0.9	0.8	0.1	0.2	0.2	0.8	90	0.2	0.2
18	18	20	2	6	5	0.4	0.4	0.1	0.1	0.1	1.1	135	0.3	0.3
20	24	39	5	11	8	0.5	0.9	0.1	0.2	0.2	1.6	216	0.5	0.3
16.4	127	127	14	36	30	2.8	2.8	0.3	0.8	0.7	1.0	112	0.3	0.2

Conversion Factors

Tons/MBF: 8.94
Tons/Cunit: 3.56
Tons/Cord: 2.90
Cunits/MBF: 2.51

Logrule & FC: D 76
Avg. Height: 1.8

VIVIAN WILLIAMS - LEWIS TRACT
TIMBER SALE MAP



Church

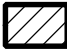
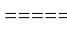


ALTON

BENSLEM CHURCH

DORILEE



Legend

-  Timber Sale Area
-  Woods Road
-  Tax Data
-  Structure

