



# Forest Land Resource Consultants, PLLC

## Consulting Forestry

P.O. Box 7 • West End, NC 27376

(910) 673-0001 Office • (910) 673-3233 Fax • [www.forestlandrc.com](http://www.forestlandrc.com)

### INVITATION TO BID ON STANDING TIMBER

Owned by

**“Green Family”**

Moore County, NC

22 wooded acres, more or less

**SALE DATE: 12:00 P.M. – 9/30/2010**

### **Timber Volumes**

<b><u>Product</u></b>	<b><u>Volume</u></b>
Pine Sawtimber	262,000 bf
Pine Pulpwood	21 tons
Red Oak	18,000 bf
Yellow Poplar Logs	13,000 bf
White Oak	21,000 bf
Sweetgum Logs	22,000 bf
Hardwood Blend	481 tons

A timber cruise using tenth acre fixed plots was performed to determine the timber volumes; however, timber volumes are given for information only and are not guaranteed. Cruise lines were spaced 3 chains apart and 2 chains between plots. Acres were determined using a GPS mobile mapping device and a beacon using DGPS correction, with sub-meter accuracy.

### **Tract Location**

This tract is located north of Bensalem Church off Alton Road, in Moore County. Refer to the attached maps for better detail.

### **Description of Timber & Land**

All merchantable timber of every sort and kind contained within the designated sale area is offered for sale on a clear-cut basis. The timber consists of a mixture of loblolly pine, longleaf pine, red and white oak, poplar, maple, hickory, and gum. The boundary for this sale has been flagged with Pink-Glo ribbon. The SMZ have not been painted. Within the SMZ all pine species and hardwood measuring 16” or larger at DBH may be harvested.

**Walter E. Thomas, RF:** Registered Forester #409 • Broker #47789 • [walter@forestlandrc.com](mailto:walter@forestlandrc.com)

**Matthew L. Wimberly, RF, ACF:** Registered Forester #1407 • Broker #254183 • Certified Burner #566 • [wimberly@forestlandrc.com](mailto:wimberly@forestlandrc.com)

**Terral Hill:** N.C. Registered Forester #772 • S.C. Registered Forester #1413 • Certified Arborist #SO-0882A • [terryhill@forestlandrc.com](mailto:terryhill@forestlandrc.com)

**Daniel D. Burton:** Registered Forester #208 • [ddb@forestlandrc.com](mailto:ddb@forestlandrc.com) (919)770-6285

## Bids

All bids for this sale will be received on a “**lump sum basis only**”. Bids will be accepted and disclosed at **12:00 P.M. Thursday, September 30, 2010** in my office in Seven Lakes. Please contact our office for directions. All interested buyers who would like to submit a bid in person are to meet at the office on the day of the sale. If you cannot be present for the sale, you have until 11:00 a.m. the same day to place your bid by mail, fax (910) 673-3233, office (910) 673-0001 or by cell phone (910) 639-0124.

The owner reserves forty-eight (48) hours to determine the acceptance or denial of any or all bids.

## Conditions of Sale

- 1) The Buyer will have twenty-four (24) months from the date of execution of the timber deed to cut and remove the timber.
- 2) No trees, laps, limbs, or other debris resulting from the logging operation shall be left in any roads, fields, branches, or across boundary or cutting lines.
- 3) All existing or constructed roads shall be left in as good as or better condition after use, as was prior to use. If weather conditions are such that excessive rutting or other damage is occurring to any areas of the property up to and including the Sale Area or Access road, Forest Land Resource Consultants, PLLC, Agent for the Seller, may suspend logging operations if appropriate measures are not taken to limit the damage.
- 4) All trash such as, but not limited to, oil cans, paper bags, sandwich wrappers, bottles, food cans, etc. are to be carried off on a daily basis.
- 5) Forest Land Resource Consultant, PLLC, Agent of the Seller, is to be notified when logging operations begin and at least three (3) days prior to completion.
- 6) **INDEMNITY CLAUSE:** The Buyer shall indemnify and hold harmless the Seller from any and all liability for loss to any person whomsoever for property damage, personal injury, death, or otherwise during activities incident to or related to this contract, including any fines resulting from noncompliance with Best Management Practices. The Buyer will carry sufficient insurance and liability insurance to protect Seller from any liability whatsoever, and will furnish evidence of such insurance upon request of Seller and/or his Agent.
- 7) The draining of oil, grease, or hydraulic oil onto the ground on this property is expressly forbidden. Drainage of such petroleum products should be into adequate containers and disposed of properly.
- 8) No line or corner witness trees are to be cut, and any destroyed property corner shall be immediately restored at the Buyer's expense.
- 9) The Buyer shall be liable for compliance with Forest Practices Guidelines Related To Water Quality (Best Management Practices): Statue 15 NCAC, Subchapter 1J, Sections .0101 thru .0209.
- 10) The Buyer shall at closing post a \$3,000.00 performance bond with Forest Land Resource Consultants, PLLC. The bond shall be forfeitable in part or in whole upon the basis of a final inspection by the Agent. The amount of the bond is not intended to limit what the agent may determine to be the maximum damage that may have been incurred or inflicted.

## Attachments

Volume summary sheets, timber sale map, and sale location map.

# Green Family

## Summary Report

02-Sep-10

Tract: Alton Rd  
 Compartment: 1  
 Stand: 1

Cruised Acres: 22  
 # of Plots: 34

Plot Type: F  
 Plot Size or BAF: 10

Product	Trees	Tons	MBF	Cords	Cunits	Topwood		BA	SPA	DBH	Ht
						Tons					
Pine Sawtimber	1,223	1,816	262	688	531	91	71	56	15.0	3.7	
Pine Pulpwood	71	21	0	8	6	0	1	3	8.2	6.9	
<b>Total:</b>	<b>1,294</b>	<b>1,837</b>	<b>262</b>	<b>696</b>	<b>537</b>	<b>91</b>	<b>73</b>	<b>59</b>	<b>14.7</b>	<b>3.9</b>	

Product	Trees	Tons	MBF	Cords	Cunits	Topwood		BA	SPA	DBH	Ht
						Tons					
Palletwood	343	248	25	87	65	11	12	16	11.7	2.6	
Sweetgum	175	209	22	73	58	28	11	8	15.6	2.5	
Hardwood Pulpwood	459	170	0	62	44	0	10	21	9.1	6.7	
White Oak	162	161	21	56	43	40	11	7	16.3	1.6	
Red Oak	110	131	18	45	35	29	8	5	17.1	1.7	
Yellow Poplar	65	85	13	31	24	14	5	3	17.0	2.4	
Hickory	45	52	6	18	15	13	4	2	17.7	1.8	
Maple	26	17	3	6	5	7	2	1	16.0	1.1	
<b>Total:</b>	<b>1,385</b>	<b>1,075</b>	<b>108</b>	<b>377</b>	<b>288</b>	<b>142</b>	<b>61</b>	<b>63</b>	<b>12.8</b>	<b>3.7</b>	

**Grand Total:**      2,679      2,911      370      1,073      824      232      133      122      13.7      3.8

DBH	Pine Sawtimber													
	Trees	Totals			Per Acre					Per Tree				
		Tons	MBF	Cunits	Topwood	Trees	Tons	MBF	Cun.	Top	Tons	BF	Cun	Top
10	97	50	5	15	18	4.4	2.3	0.2	0.7	0.8	0.5	47	0.2	0.2
12	246	211	24	63	28	11.2	9.6	1.1	2.8	1.3	0.9	97	0.3	0.1
14	285	349	45	103	21	12.9	15.9	2.1	4.7	0.9	1.2	159	0.4	0.1
16	317	546	77	160	16	14.4	24.8	3.5	7.3	0.7	1.7	242	0.5	0.1
18	155	315	50	92	5	7.1	14.3	2.3	4.2	0.2	2.0	322	0.6	0.0
20	78	194	33	56	2	3.5	8.8	1.5	2.5	0.1	2.5	425	0.7	0.0
22	26	78	14	22	0	1.2	3.5	0.6	1.0	0.0	3.0	547	0.9	0.0
24	13	46	9	13	0	0.6	2.1	0.4	0.6	0.0	3.5	674	1.0	0.0
26	6	27	5	8	0	0.3	1.2	0.2	0.3	0.0	4.1	825	1.2	0.0
15.0	1,223	1,816	262	531	91	55.6	82.5	11.9	24.1	4.1	1.5	214	0.4	0.1

**Conversion Factors**

Tons/MBF: 6.94  
 Tons/Cunit: 3.42  
 Tons/Cord: 2.64  
 Cunits/MBF: 2.03

**Logrule & FC:** S 78  
**Avg. Height:** 3.7

**Yellow Poplar**

DBH	Trees	Totals		Per Acre							Per Tree			
		Tons	MBF	Cunits	Topwood	Trees	Tons	MBF	Cun.	Top	Tons	BF	Cun	Top
16	45	55	8	15	8	2.1	2.5	0.4	0.7	0.4	1.2	180	0.3	0.2
18	6	10	2	3	2	0.3	0.5	0.1	0.1	0.1	1.5	248	0.4	0.2
20	13	20	4	6	4	0.6	0.9	0.2	0.3	0.2	1.5	275	0.4	0.3
17.0	65	85	13	24	14	2.9	3.9	0.6	1.1	0.6	1.3	206	0.4	0.2

**Conversion Factors**

Tons/MBF: 6.38  
 Tons/Cunit: 3.57  
 Tons/Cord: 2.75  
 Cunits/MBF: 1.78

**Logrule && FC: S 78**  
**Avg. Height: 2.4**

**White Oak**

DBH	Trees	Totals		Per Acre							Per Tree			
		Tons	MBF	Cunits	Topwood	Trees	Tons	MBF	Cun.	Top	Tons	BF	Cun	Top
14	58	43	5	11	10	2.6	1.9	0.2	0.5	0.5	0.7	90	0.2	0.2
16	58	60	8	16	13	2.6	2.7	0.4	0.7	0.6	1.0	136	0.3	0.2
18	19	23	3	6	6	0.9	1.0	0.1	0.3	0.3	1.2	160	0.3	0.3
20	13	19	3	5	5	0.6	0.8	0.1	0.2	0.2	1.4	205	0.4	0.4
22	13	17	2	4	6	0.6	0.8	0.1	0.2	0.3	1.3	187	0.3	0.4
16.3	162	161	21	43	40	7.4	7.3	1.0	1.9	1.8	1.0	132	0.3	0.2

**Conversion Factors**

Tons/MBF: 7.56  
 Tons/Cunit: 3.79  
 Tons/Cord: 2.90  
 Cunits/MBF: 1.99

**Logrule && FC: S 76**  
**Avg. Height: 1.6**

**Sweetgum**

DBH	Trees	Totals		Per Acre							Per Tree			
		Tons	MBF	Cunits	Topwood	Trees	Tons	MBF	Cun.	Top	Tons	BF	Cun	Top
14	78	75	6	21	9	3.5	3.4	0.3	0.9	0.4	1.0	83	0.3	0.1
16	65	83	9	23	11	2.9	3.8	0.4	1.0	0.5	1.3	135	0.4	0.2
18	26	41	5	12	6	1.2	1.9	0.2	0.5	0.3	1.6	198	0.4	0.2
20	6	10	1	3	2	0.3	0.5	0.1	0.1	0.1	1.5	228	0.4	0.3
15.6	175	209	22	58	28	7.9	9.5	1.0	2.6	1.3	1.2	124	0.3	0.2

**Conversion Factors**

Tons/MBF: 9.64  
 Tons/Cunit: 3.61  
 Tons/Cord: 2.87  
 Cunits/MBF: 2.67

**Logrule && FC: D 78**  
**Avg. Height: 2.5**

**Red Oak**

DBH	Trees	Totals		Per Acre							Per Tree			
		Tons	MBF	Cunits	Topwood	Trees	Tons	MBF	Cun.	Top	Tons	BF	Cun	Top
14	39	26	3	7	7	1.8	1.2	0.1	0.3	0.3	0.7	83	0.2	0.2
16	26	29	4	8	5	1.2	1.3	0.2	0.3	0.2	1.1	144	0.3	0.2
18	19	24	3	6	6	0.9	1.1	0.2	0.3	0.3	1.3	173	0.3	0.3
20	13	19	3	5	5	0.6	0.8	0.1	0.2	0.2	1.4	205	0.4	0.4
24	13	33	5	9	6	0.6	1.5	0.2	0.4	0.3	2.6	393	0.7	0.5
17.1	110	131	18	35	29	5.0	6.0	0.8	1.6	1.3	1.2	164	0.3	0.3

**Conversion Factors**

Tons/MBF: 7.28  
 Tons/Cunit: 3.78  
 Tons/Cord: 2.90  
 Cunits/MBF: 1.93

**Logrule && FC: S 76**  
**Avg. Height: 1.7**

**Palletwood**

DBH	Trees	Totals		Per Acre							Per Tree			
		Tons	MBF	Cunits	Topwood	Trees	Tons	MBF	Cun.	Top	Tons	BF	Cun	Top
10	65	30	3	8	1	2.9	1.4	0.1	0.4	0.0	0.5	41	0.1	0.0
12	272	215	22	56	8	12.4	9.8	1.0	2.6	0.4	0.8	81	0.2	0.0
14	6	3	0	1	1	0.3	0.2	0.0	0.0	0.1	0.5	65	0.1	0.2
11.7	343	248	25	65	11	15.6	11.3	1.1	3.0	0.5	0.7	73	0.2	0.0

**Conversion Factors**

Tons/MBF: 9.93  
 Tons/Cunit: 3.81  
 Tons/Cord: 2.87  
 Cunits/MBF: 2.61

**Logrule && FC: S 76**  
**Avg. Height: 2.6**

**Maple**

DBH	Trees	Totals		Per Acre							Per Tree			
		Tons	MBF	Cunits	Topwood	Trees	Tons	MBF	Cun.	Top	Tons	BF	Cun	Top
14	6	3	0	1	1	0.3	0.1	0.0	0.0	0.1	0.5	65	0.1	0.2
16	13	9	1	3	3	0.6	0.4	0.1	0.1	0.2	0.7	105	0.2	0.3
18	6	5	1	1	2	0.3	0.2	0.0	0.1	0.1	0.7	119	0.2	0.3
16.0	26	17	3	5	7	1.2	0.8	0.1	0.2	0.3	0.6	99	0.2	0.3

**Conversion Factors**

Tons/MBF: 6.57  
 Tons/Cunit: 3.55  
 Tons/Cord: 2.75  
 Cunits/MBF: 1.85

**Logrule && FC: S 76**  
**Avg. Height: 1.1**


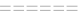


**Hickory**

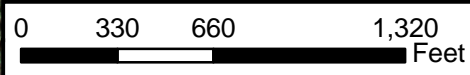
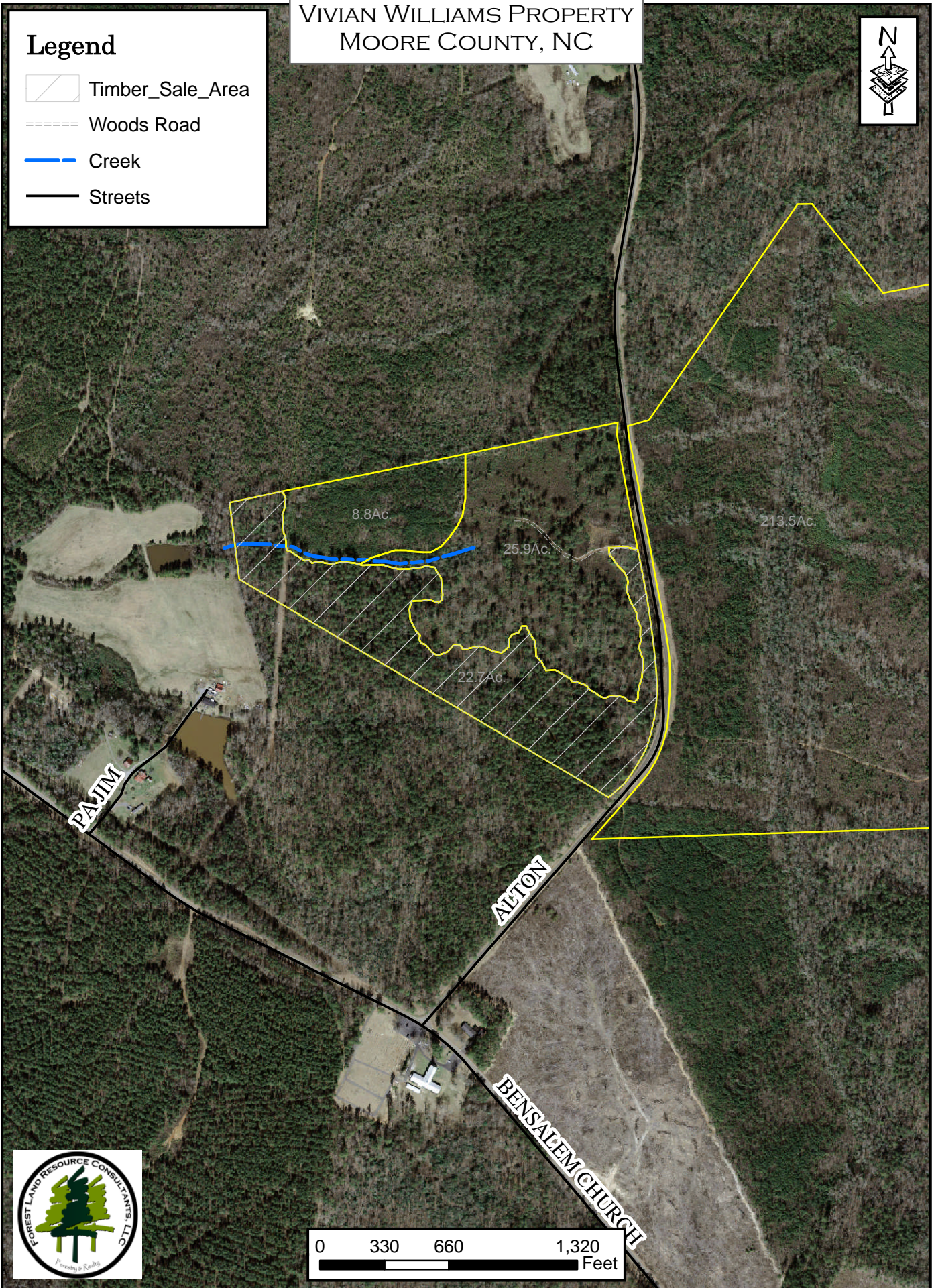
DBH	Trees	Totals		Per Acre							Per Tree			
		Tons	MBF	Cunits	Topwood	Trees	Tons	MBF	Cun.	Top	Tons	BF	Cun	Top
14	13	9	1	3	2	0.6	0.4	0.0	0.1	0.1	0.7	63	0.2	0.2
18	13	15	2	4	4	0.6	0.7	0.1	0.2	0.2	1.1	140	0.3	0.3
20	19	28	4	8	7	0.9	1.3	0.2	0.4	0.3	1.4	198	0.4	0.3
17.7	45	52	6	15	13	2.1	2.4	0.3	0.7	0.6	1.2	143	0.3	0.3

VIVIAN WILLIAMS PROPERTY  
MOORE COUNTY, NC



**Legend**

-  Timber\_Sale\_Area
-  Woods Road
-  Creek
-  Streets



# Green Family Timber Sale Location

